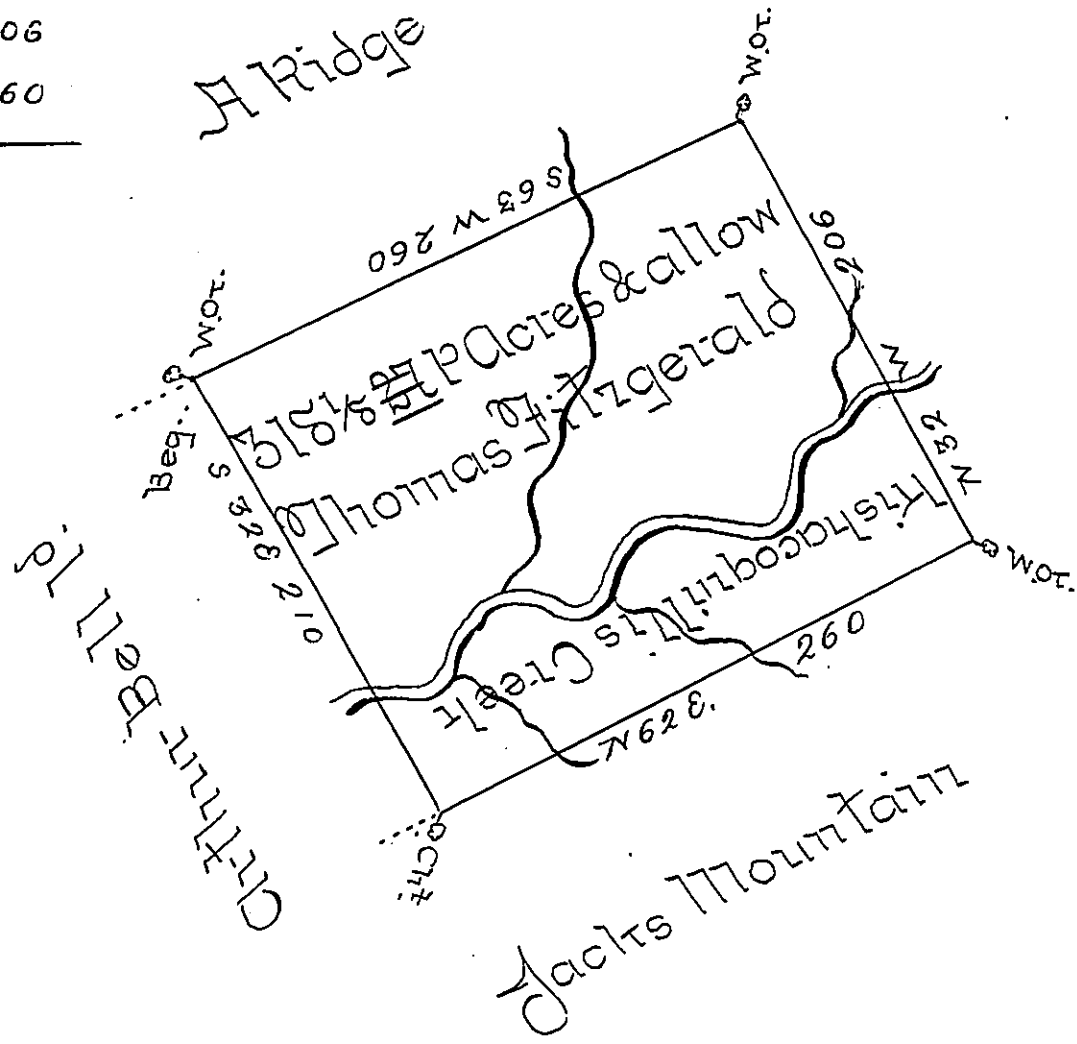


Courses & Distances

S	32	E	210
N	62	E	260
N	32	W	206
S	63	W	260



The draft of a tract of land situate on the East Branch of Kishacoquillis Creek in Cumberland County containing three hundred & eighteen acres & 27 perches & the usual allowance of six per Cent. for Roads &c^a surveyed for Thomas Fitzgerald Dec^r the 16th 1754 in Pursuance of a Warrant from His Excellency the President of the Supreme Executive Council Dated at Philad^a Sept^r the 2^d 1754 ~

pr Jas Harris D.S.

John Lukens Esq^r }
 Surv^r Gen^l ~ }

IN TESTIMONY that the above is a copy of the original remaining on file in the Department of Internal Affairs of Pennsylvania, made conformably to an Act of Assembly approved the 16th day of February, 1833, I have hereunto set my Hand and caused the Seal of said Department to be affixed at Harrisburg, this third day of October 1899.

James W. Latta
 Secretary of Internal Affairs.